

Connecting the BC600 to your Computer

The BC600 connects to your PC compatible computer using either a USB port or a free RS-232 port. The BC600 is shipped standard with the USB cable. An optional RS232 cable can be ordered for nominal cost from your dealer. Note that the USB cable is required to charge the BC600, and the USB port it connects to must be a powered port. This is almost always the case with a desktop computer, but some laptops are not capable of providing sufficient current to charge the unit.



Installing ExpoTools Setup

Double click the 'ExpoTools Setup' folder on the supplied CD-ROM, and then double click the 'Setup.exe' file. This will guide you through the installation of the reader configuration program. Once installed, you can run this from 'Start → Specialty Sensor Technologies → SST reader setup'.

Installing ExpoTools Download

Double click the 'ExpoTools Download' folder on the supplied CD-ROM, and then double click the 'Setup.exe' file. This will guide you through the installation of the downloading program. Once installed, you can run this from 'Start → Specialty Sensor Technologies → SST onsite download program'.

Note that you will still need to install the USB drivers if you plan on using the USB port for connection to the portable reader.

Using the RS232 Interface

Plug one end of the cable into a free serial port on your computer, and insert the other end into the round connector on the BC600.

<p>Warning: Do not confuse the serial port connector with another connector that may be present on your computer, such as a VGA connector.</p>
--

When using the RS232 connection, no additional drivers are required. You will, however, need to have a correctly configured port. Many computers ship with the RS232 port disabled.

Using the USB Interface

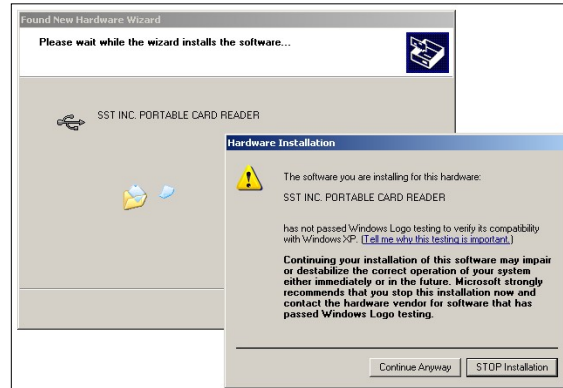
To use the BC600 with the USB interface, you will need to install the appropriate drivers. These are provided on the disk supplied with the BC600. You will need this disk the first time you connect a BC600 to your computer.

To start installation, connect the larger end of the USB cable to a free USB port on your computer. Connect the other end to the BC600.

After a few seconds, your computer should detect the new hardware, and ask you where it can find the drivers for this hardware. Insert the supplied disk and instruct the computer to look on that disk in the “USB Drivers” folder.

If the computer shows a warning stating that the drivers are not ‘signed’, click on ‘Continue Anyway’.

This message does not indicate a problem; it simply means that the operating system does not recognize them as “standard” computer peripheral drivers.



After the system installs the USB driver, it will install a second driver, which will make the BC600 interface ‘look’ like an RS232 port. Follow the same steps as for the first driver.

Charging the BC600

The BC600 recharges its internal battery from the USB port, although an optional 5volt wall transformer is available if you wish to recharge the unit separately. When connected to the USB port, the yellow light on the right side will come on, indicating the unit is charging. Once charged, the yellow light will go off, and the charger will switch to ‘top-up’ mode. You can leave the BC600 on the charger as long as you like, since the charger is smart and will not harm the battery.

If the yellow light does not come on when you connect the unit, this indicates that the battery is fully charged.

Run time on the battery will vary, depending on exactly how it is used, but as a rule of thumb, you can expect three 8-hour shifts before recharging will be required, although this varies with the number of scans performed.

Setting up the BC600 and Downloading the Data

In order to properly display the scanned information, you may need to set-up the BC600 reader ahead of time. A **set-up program** allows you to do this, as well as change the information on the start-up screen and set the time.

To extract the information, you will need to use the **Download program**. This program will download the information and automatically store it in several locations.

These programs are separate, allowing you to hand-out the downloading program without necessarily handing out the set-up program.

In addition, an interface guide is available to qualified developers should you wish to tie the system into custom software. A quick start guide intended for end-users is also available, and it is suitable for incorporation into your own manual or documentation.

Other Documentation

The supplied CD-ROM contains the entire operation guide for ExpoTools Setup as well as for ExpoTools Download in MS-Word format. In addition, specification sheets and a 'quick-start' guide intended for the end-user or exhibitor is also provided in PDF format.